

A &  
D S

SCOTTISH  
FUTURES  
TRUST

# Learning Estate Investment Programme

*Phase 2 Launch*

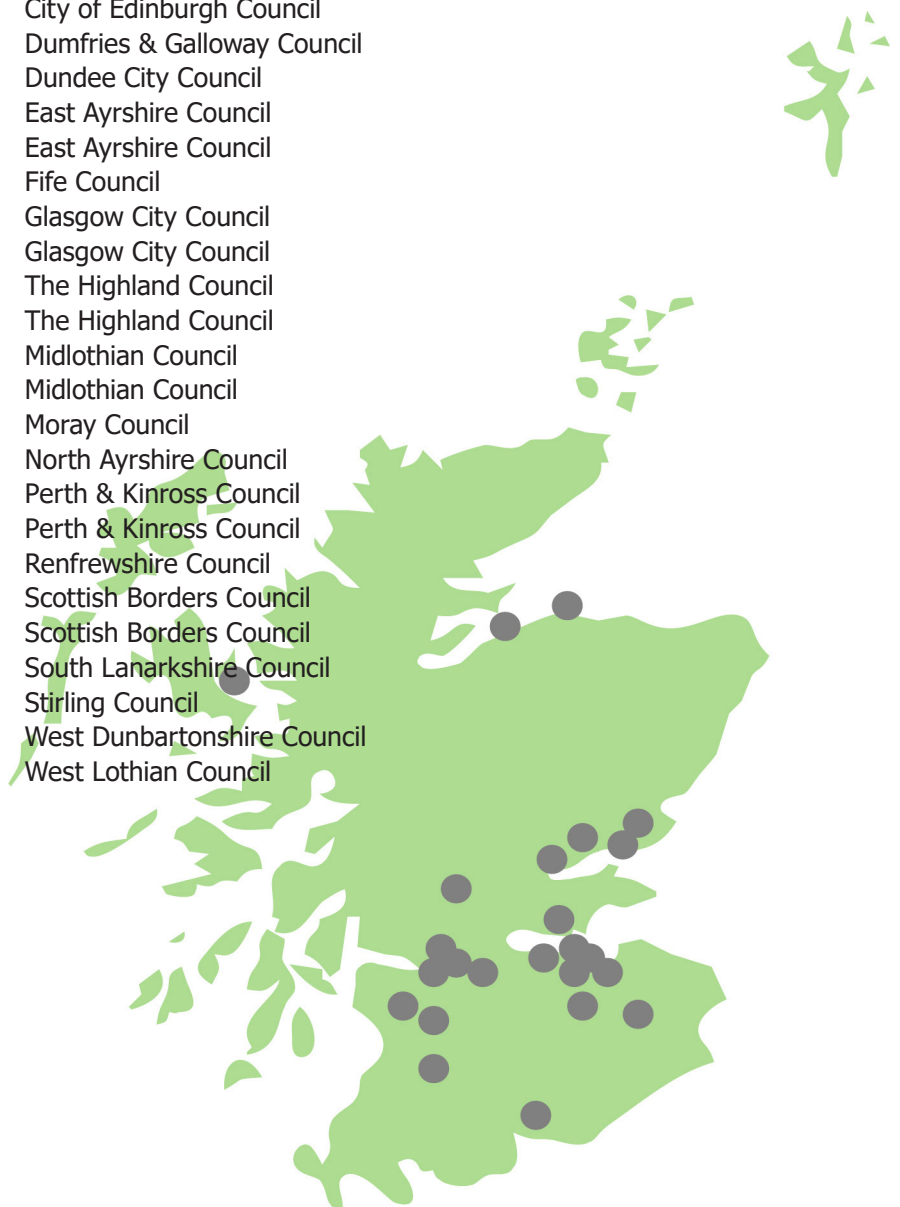
## Project Overview

10th March 2021

## List of Projects

Monifieth High School  
 Liberton High School  
 Wester Hailes Education Centre  
 North East Campus  
 East End Campus  
 Doon Valley Community Campus  
 St Sophia's Primary School  
 Inverkeithing High School  
 New City Centre Primary School  
 Gaelic Primary School  
 Broadford Primary School  
 Nairn Academy  
 Penicuik High School  
 Mayfield Primary School Campus  
 Findrassie Primary School  
 Montgomerie Park Primary School  
 Perth High School  
 North Perth Primary School  
 Paisley Grammar Community Campus  
 Galashiels Academy  
 Peebles High School  
 Newton Farm Primary School  
 Callander Primary School  
 Faifley Campus  
 East Calder Primary School

Angus Council  
 City of Edinburgh Council  
 City of Edinburgh Council  
 Dumfries & Galloway Council  
 Dundee City Council  
 East Ayrshire Council  
 East Ayrshire Council  
 Fife Council  
 Glasgow City Council  
 Glasgow City Council  
 The Highland Council  
 The Highland Council  
 Midlothian Council  
 Midlothian Council  
 Moray Council  
 North Ayrshire Council  
 Perth & Kinross Council  
 Perth & Kinross Council  
 Renfrewshire Council  
 Scottish Borders Council  
 Scottish Borders Council  
 South Lanarkshire Council  
 Stirling Council  
 West Dunbartonshire Council  
 West Lothian Council



# Introduction

## Context

In December 2020, Phase 2 of the Learning Estate Investment Programme (LEIP), which aims to benefit around 50,000 pupils across Scotland by the end of the next Parliament, was announced by Scottish Government.

Phase 2 includes 25 projects across 18 local authorities in Scotland. From small extensions, refurbishments of historic buildings, new facilities to accommodate growth and the development of multi service campuses, the Phase 2 projects all present their own challenges and exciting opportunities. All projects will align to the principles of the Learning Estate Strategy and the objectives and outcomes of the LEIP, which includes targets around energy efficiency, digital enablement, inclusive growth and the ongoing maintenance of the new and refurbished facilities.

Ahead of the launch of Phase 2, local authorities were invited to provide a short synopsis of their Phase 2 project, along with a challenge they foresee and something that excites them about their project.

This information has been collated and presented for each project below.

# Project Overview



## Monifieth High School Angus Council

In 2018 Angus Council set out their vision and specific proposals for the transformation of the learning estate over the next decade. The focus is on providing learning environments which are the best they can be to support our children, young people and all learners to achieve.

We see our learning estate as community learning resources, rather than a series of schools. Our planned new build Monifieth Learning Campus will offer an enhanced learning and teaching experience for 1200 young people while increasing opportunities to support the community and public sector partners. Location, configuration and accessibility are critical components, and we will work with our community partners in and around Monifieth to co-design a facility that enhances learning opportunities for all, improves outcomes and contributes to a vibrant and sustainable future for the area.

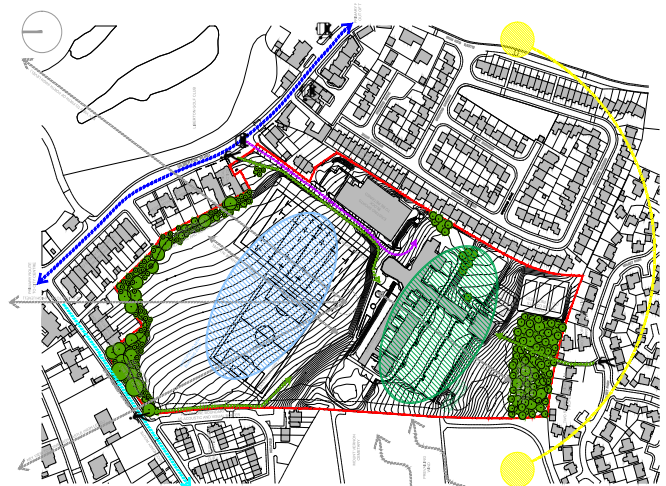
The new Monifieth Learning Campus will provide a high-quality learning environment for the 21st Century, embedding both our local Angus Learning Estate Strategy and the national Learning Estate Investment Programme targets.

### Challenge

Consultation - meaningful engagement through early consultation. The current challenges and restrictions of the Covid pandemic requires a new approach to consultation methods.

### Exciting!

Creating a true community asset with focus on multi-use shared spaces, co-designing a facility that enhances learning opportunities for all.



## Liberton High School City of Edinburgh Council

Aligned to the aspirations of the Council's Adaptation and Renewal programme this project provides significant opportunity to create, as part of an inclusive net zero-carbon city, a community lifelong learning and sports hub where public services can be co-located with links to active travel networks, green infrastructure and strategic public transport networks.

The project will develop excellent facilities that meet all the aspirations of the Scottish Government Learning Estate Investment Strategy to connect people, places and learning, improve outcomes for all and promote sustainable and inclusive economic growth.

The Council is committed to all learning estate building investment being constructed to Passivhaus standards and designed to meet the city-wide aspirations for the curriculum to address all inclusion, digital and outdoor learning requirements.

### Challenge

Ensuring the operational management for the building reflects its status as a fully accessible community resource rather than just a school.

### Exciting!

The support of the school and wider community – they are so enthusiastic about the project and want to work with the design team to get the job done as quickly as possible.





## Wester Hailes Education Centre

### City of Edinburgh Council

In Wester Hailes, the Council is progressing with a wide-ranging regeneration programme, linked to the emerging City Plan 2030 and investment in the learning estate lies at the heart of this initiative.

Opportunities to expand the roll of the school through new brownfield housing development and catchment area review considering currently unbuilt sites allocated in the Local Development Plan will be a fundamental part of the regeneration process.

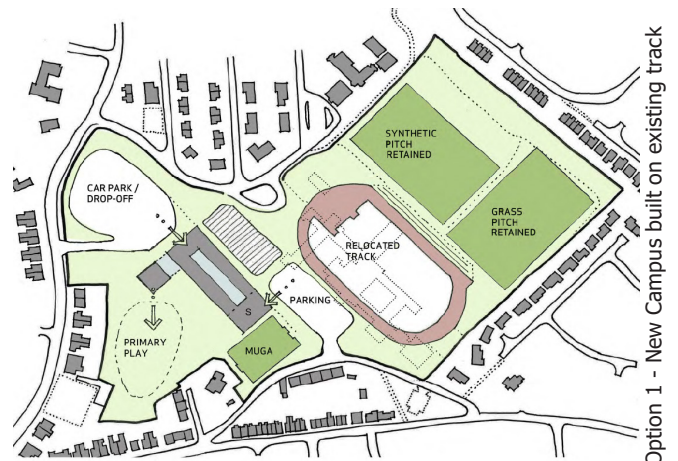
Wester Hailes also aims to become centre of expertise for digital learning taking a leading role in the wider roll out across the city and working closely with further and higher education providers.

### Challenge

This project is for Phase 2. Delivering on a difficult site while the school remains operational is a significant challenge.

### Exciting!

Opportunity for the project to be at the heart of a wider transformational regeneration initiative.



## North East Campus

### Dumfries & Galloway Council

At North East Campus we will create a flexible, modern and inclusive facility for the community of Dumfries. This project will deliver a new build facility on the land adjacent to the existing Dumfries High School and the design will encourage community participation in lifelong learning activities, creates opportunities for all, personal development and promotes positive citizenship. Through design, DGC wish to see the following principles addressed:

- To deliver a well-designed school that inspires new learning and teaching, and that can adapt to future needs;
- To deliver a successful design solution that has a sense of place;
- To deliver a design solution that integrates well with its physical surroundings;
- To be an outstanding example of effectiveness, efficiency and innovation, delivered through collaborative environments;
- To incorporate sustainable travel solutions;
- To deliver a building that is environmentally sustainable and meets ambitious energy targets;
- To deliver a facility that engenders a strong sense of community identity and pride;
- To deliver a digitally enabled facility; and
- To be an effective contribution to the community.

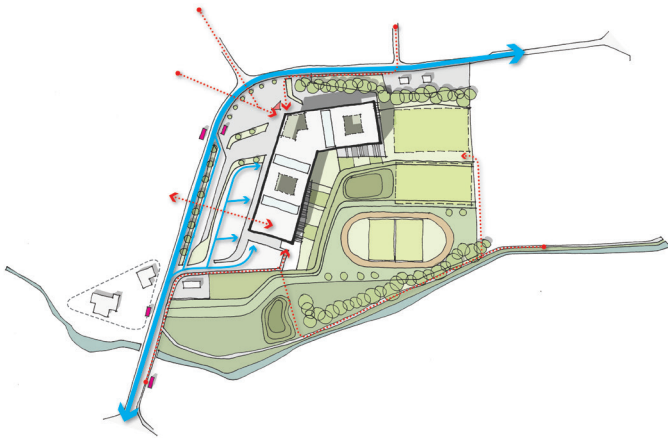
### Challenge

Delivering a new school building to the new energy target.

### Exciting!

Working through from inception to design, construction and commissioning to ensure that the building operates and meets the new energy target criteria.

Option 1 - New Campus built on existing track



## East End Campus

### Dundee City Council

The community campus will build on existing partnership working and embrace good practice from the existing schools. It is intended that it will:

- Deliver a new 1879 pupil secondary campus merging 2 existing schools which were constructed in the early 1970s on a new site.
- Provide a focal point for the local community and be an openly available resource enabling increased use of facilities by community;
- Feel natural and approachable, whilst creating a clear separation between public and private functions of the school without feeling exclusive;
- Be a large school designed around clusters/faculties, creating connections and stimulating interaction between different parts of the school community;
- Prioritise the activities and function of the school community ahead of the operational/logistical functions of managing the building;
- Integrate into everyday routes around the community and connect to existing and future local amenities;
- Maximise natural light and Co2 levels for both internal and external spaces; and
- Give priority to people ahead of transport in a way that supports and encourages active travel.

### Challenge

Project scale - welcoming and approachable whilst providing as many opportunities as possible.

### Exciting!

Chance to deliver a purpose built community campus and bring communities together - long term resilience and multi-functional accommodation.



## Doon Valley Community Campus

### East Ayrshire Council

The Doon Valley Community Campus will replace the existing Doon Academy and Supported Learning Centre, Dalmellington Primary School and Early Childhood Centre, Doon Valley Leisure Centre, and the previous award winning Dalmellington Area Centre which is a shared services building hosting the Health Centre, local council services and police services.

The proposed project will replace all existing buildings to provide a new campus building that will incorporate accommodation for secondary, primary and supported learning pupils, a new health centre, replacement leisure facilities including swimming pool, fitness suite, dance studio and rehabilitation centre, an Outdoor Activities Centre, civic and community space, and office accommodation for local public services such as social services, housing and police services. The project also aims to provide new Additional Support Needs accommodation for local young people who are currently to travel out with the area to access facilities.

The campus is considered critical to transforming the Doon Valley area which is one of the most deprived communities in Scotland; with child poverty levels of 31% and high unemployment. It is a prime example of the cycle of poverty, poor health and low educational attainment and achievement which needs challenged if real progress to be made.

### Challenge

Collaboration with external partners specifically NHS Ayrshire & Arran.

### Exciting!

Place making in action - campus at both physical and spiritual heart of community to improve outcomes.



## St Sophia's Primary School

### East Ayrshire Council

St Sophias Primary School is a small 1950s building located in Galston, Ayrshire serving the denominational catchment of the Irvine Valley. The existing building was rated as being in a C condition as per the most recent School Estate Management Plan, and has a current role of 95 pupils. The building is also made up of a number of single and two storey elements that incorporate a number of level changes that detrimentally impact on accessibility and usability.

Originally the intentions were to complete a typical refurbishment of the school to improve its condition and to some degree its suitability; with the aim of extending the buildings current lifespan by 20 years or more. However given future ambitions in terms of the Climate Change (Scotland) Bill for Scotland to reduce its emissions of all greenhouse gases to net-zero by 2045 it was agreed that the building could be retro-fitted to an EnerPHit standard within the available budget.

East Ayrshire Council subsequently procured the services of Hamson Barron Smith through the ESPO (Eastern Shires Purchasing Organisation) Framework in May 2020 to support the wider team; with the project reaching RIBA Stage 2 – Concept Design as planned in December 2020.

### Challenge

Lack of robust cost data for similar EnerPHit projects.

### Exciting!

UK's first EnerPHit refurbishment of an existing primary school, providing a huge opportunity for shared learning across the public sector in Scotland.



## Inverkeithing High School

### Fife Council

Due to rising school rolls and housing development the priority identified for future school replacement in Fife is in the secondary sector, across the Dunfermline and south and west Fife area. Planning is being undertaken at this geographical area level, considering the wider community needs as well as the education needs of existing and potential future pupils. This geographical approach involves tailoring of solutions across the area to meet local need, as the vision cannot be achieved through the delivery of one project in isolation and consists of several co-dependent change projects. This will enable a step change in education provision, addressing the poor condition of our schools, and providing new fit for purpose facilities to meet existing demand and providing additional capacity to support housing development across the area.

The solution preferred by the Council to address these condition and capacity issues is to promote a distributive model. The consequence of this strategy is to consolidate secondary educational provision in Dunfermline and south and west Fife in 5 schools located on 4 sites. A key project in the delivery of this Council strategy is the replacement of Inverkeithing High School. This project will replace a life expired facility, which has significant condition, suitability and accessibility issues, and build additional capacity to support strategic housing development across the area.

### Challenge

Community engagement and ensuring buy in over site of project.

### Exciting!

Fit for purpose space to enable new approaches to learning and teaching.

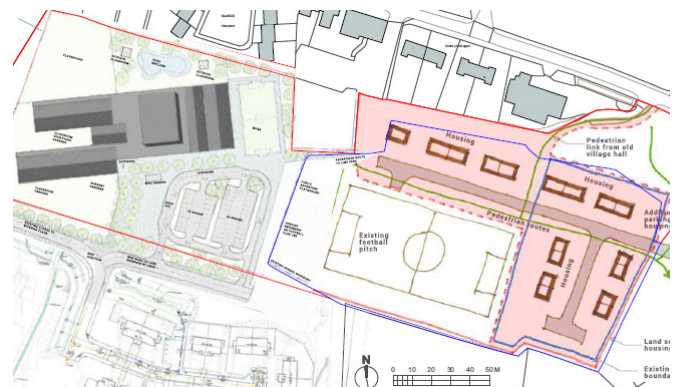




Gaelic Primary School



New City Centre PS



## New City Centre Primary School & Gaelic Primary School

Glasgow City Council

The funding Glasgow City Council will receive through the LEIP will support Glasgow to develop a fourth and much needed centre of Gaelic immersion education to be located for the first time in the north east of the city and to create a new City Centre School to support the local population and new communities.

The projects will centre on two Victorian Parish School buildings developed into high quality contemporary learning establishments. Glasgow City Council's in-house technical team are excited to grasp the challenge of how to deliver on the energy in use requirements of the funding conditions within listed historic buildings and are looking at various strategies to ensure that the targets are achieved and maintained. The former St James Primary in Calton is one of a few remaining historic buildings in the area and as the new Gaelic centre it will also secure a substantial example of Glasgow's Victorian past for the community and future generations.

The city centre project site is adjacent to the Clyde where the new school could potentially benefit from an ambitious heat recovery project currently in the planning stage. The location of the city centre school forms a wider campus of learning enterprise.

### Challenge

Delivering the energy requirements in listed Victorian buildings.

### Exciting!

The challenge is exciting!

## Broadford Primary School

The Highland Council

The project will provide a replacement primary school and nursery, with community hub.

The new school and community hub will be built on Council land adjacent to the existing school with easy pedestrian and vehicle access. Following completion the vacated school land will be available for housing.

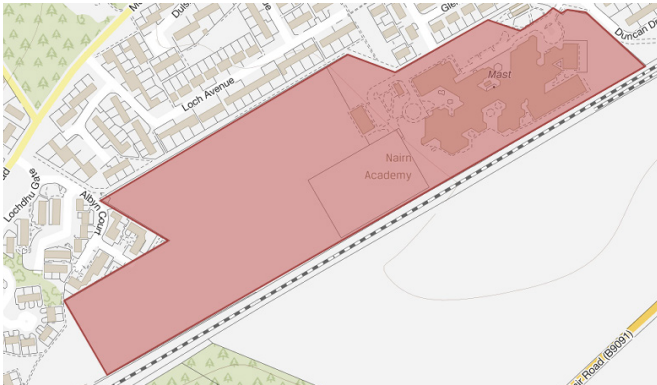
School roll of 170 pupils, Gaelic medium and English medium.

### Challenges

1. Coordination with multiple and diverse community groups on Hub component;
2. Passivhaus whole building design.

### Exciting!

Place-based approach since 2018 involving community groups, housing assoc., and Highland Council on project development, now coming to fruition. School with Hub will provide needed facilities to meet local demand, available all year, and serving the whole community.



## Nairn Academy

### The Highland Council

The project will provide a replacement academy and community sports facilities on the existing school site. The build will be on the existing grass pitches, retaining the 3G pitch and sports pavilion. School roll of 760 pupils.

#### Challenge

The most challenging thing about the site is access. The site is tucked towards the rear of a quiet housing development with limited vehicular access, bound by a railway line to the South.

#### Exciting!

The management team within the school are forward thinking and very interested in community engagement on all levels. They currently work with a number of local community groups and charities within the existing school and see this development as an opportunity to expand upon the work they are doing making the project an exciting opportunity for the whole community. We are currently investigating the potential to bring the community library and a nursery on to the site along with the existing football club facility and replacement community sports facilities.



## Penicuik High School

### Midlothian Council

The project is to refurbish, replace and extend Penicuik High School on its existing site. The new/refurbished facility will serve an expanded area to accommodate pupil growth in Midlothian. Our strategy to accommodate this growth in our non-denominational schools is to provide capacity for 1,800 pupils at Lasswade High School and capacity for 1,200 pupils at both Beeslack (A701) and Penicuik High Schools, combined with a rezoning of catchment areas to maximise the potential of these three key sites.

We have engaged with SFT and Zero Waste Scotland to produce a Case Study of the proposed work. The study will look at the retrofit of the original building and the replacement/retrofit of the 1960's building and develop a net zero carbon strategy for this project in line with the Council's own targets using the Net Zero Carbon Public Sector Buildings standard.

Our strategic objectives for this project are:

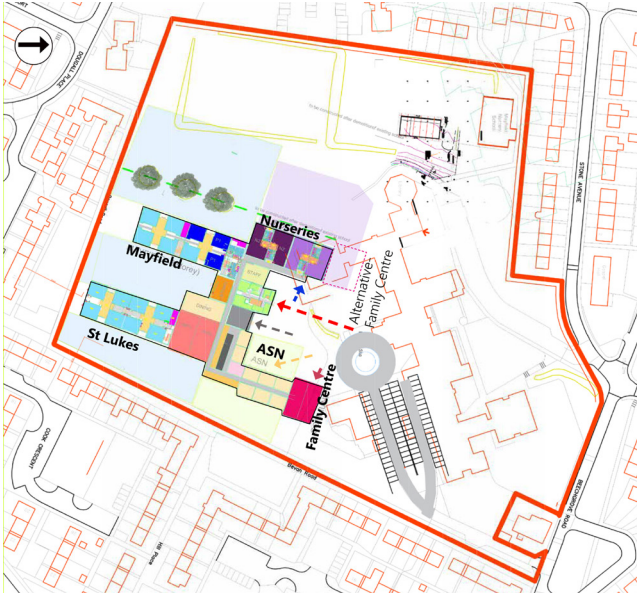
- One high school to serve the community of Penicuik
- Penicuik High School becomes a state of the art specialist facility, broadening the curriculum offer across our secondary learning estate
- The new/refurbished building contributes to reducing the council's carbon footprint and assists Midlothian to achieve its 2030 Net Zero Carbon goal.

#### Challenge

Carbon neutral refurbishment.

#### Exciting!

The challenge above and how this ties in with the Council's net zero carbon commitments.



## Mayfield Primary School Campus Midlothian Council

This project will replace the Mayfield School Campus which includes Mayfield Nursery School, Sure Start, Mayfield Primary School and St Luke’s Primary School and will include an expanded Additional Support Needs Provision. The campus is located within one of the more socio-economic deprived communities in Midlothian, a community which is already taking forward a place-based approach to improving the infrastructure and facilities in the area. We have already proven with the outcomes from Newbattle High School how the destiny of these children can be much improved by giving them the best possible opportunity to learn and develop. We believe similar to the impact of the Newbattle Campus, equipping children from our most deprived area with the best possible learning environment will create the opportunity to raise the aspirations of the community.

Our strategic objectives for this project are:

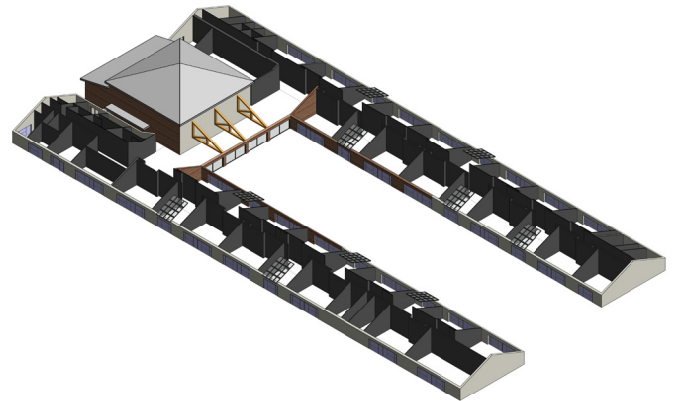
- To equip Mayfield children with the best possible learning environment and create the opportunity to raise the aspirations of the community.
- Mayfield School Campus becomes a state of the art facility, which meets the needs of all learners in the wider community.
- The new building contributes to reducing the council’s carbon footprint and assists Midlothian to achieve its 2030 Net Zero Carbon goal.

### Challenge

To design the optimal solution for this multi-service facility while maintaining operation of existing facilities.

### Exciting!

Raise aspirations of the community.



## Findrassie Primary School Moray Council

Findrassie Primary School will be a new school and nursery within the new Findrassie masterplan to the north of Elgin. The school and nursery are required to help address capacity issues in Elgin and will be the first project in Moray to be taken forward within our strategic framework for managing our learning estate.

The project will be developed alongside the development of our Moray design brief for new and refurbished primary schools and will therefore provide a model for future school developments in Moray. The new Findrassie school will incorporate community spaces and indoor & outdoor spaces for supporting children with additional support needs. The ASN spaces will be designed and developed alongside our review of ASN provision in Moray and are therefore likely to be more flexible in their nature than our existing ‘enhanced provisions’.

### Challenges

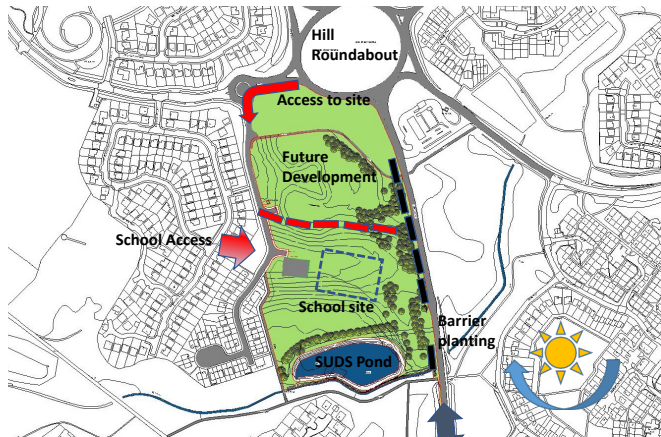
Developing the school in time to meet our capacity needs (and understanding our capacity requirements in the short-term due to military movements in and out of the area).

Developing the project whilst building a new Learning Estate team, and in tandem with the development of a design brief for our primary schools.

### Exciting!

The opportunity to set a standard for the future, and to develop a school within a Masterplan area that shares the principles of the Learning Estate Strategy, for example by incorporating a number of community facilities and spaces, including opportunities for outdoor learning (community allotments, easy access to Findrassie woods etc).





## Montgomery Park Primary School

### North Ayrshire Council

As a result of increased numbers of children in the area, North Ayrshire Council approved funding for a new 12-class non-denominational primary school at Montgomery Park, Irvine to include early learning and childcare provision for 32 three to five-year olds and 15 two-year olds within their locality.

The new facility of high quality, modern learning and teaching spaces, will be flexible, functional and future proof. In terms of sustainability and environmental impact, the proposed new facility will meet the guiding principles set out in 'Scotland's Learning Estate Strategy'. Sustainability will be a key objective in both the construction of the new school and in reducing unnecessary journeys within the town, contributing to the Council's target of reducing our carbon footprint and the Scottish Government's ambitious policy target to achieve a near zero carbon estate by 2030.

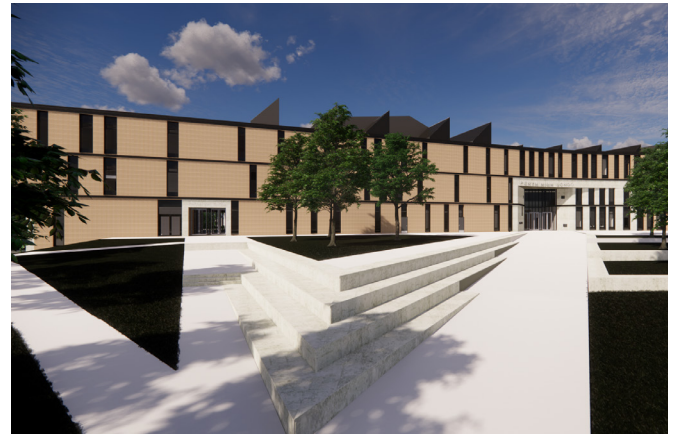
With access to woodland areas, walks, ponds and local historic monuments, strong links and relationships will be fostered to develop innovative outdoor learning experiences, enhancing emotional, social and physical well-being and providing freedom to learn. The space and sheltered learning and teaching facilities required to maximise the outdoor experience for children, will be at the forefront of this exciting project.

### Challenge

Brand new school so no current staff/pupil cohort to engage/collaborate with.

### Exciting!

The wealth of opportunity for the children to experience outdoor learning both within, and outwith, the school grounds is a very exciting prospect.



## Perth High School

### Perth & Kinross Council

The replacement of Perth High School is one of the most significant projects for the Learning Estate in Perth and Kinross. It will deliver a new building to replace a condition 'C' and suitability 'C' building at a cost of approximately £58.3m. The new building will be located on the sports pitches of the school site.

The building is to be designed and constructed to meet the Passivhaus standard. This sets a high specification for a sustainable building with a low carbon footprint and a properly ventilated environment conducive to pupil wellbeing and learning. By adopting this approach, PKC will be able to comply with actions set out in its own Interim Climate Emergency Report and Action Plan

The new building will accommodate the largest cohort of pupils at any school in Perth and Kinross with capacity for 1600 pupils. It will also enhance the learning opportunities for all senior pupils in Perth, through access to improved facilities for the Perth City Campus. The building will also provide increased access to community facilities and support the Perth and Kinross 'Offer' which seeks to be responsive to the changing needs within our communities.

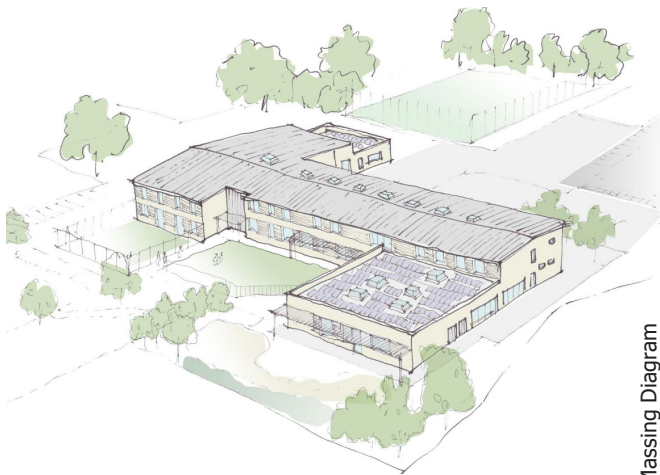
### Challenge

The Passivhaus standard is a challenge for the project team, particularly balancing education/user requirements with technical/Passivhaus requirements. It is also a learning curve for the project team.

### Exciting!

Energy approach supporting climate targets, links to wider area initiatives - in terms of energy and innovation.





Massing Diagram



## North Perth Primary School Perth & Kinross Council

This project will create a new primary school for 500 pupils, a nursery for 82 children and specialist provision for children with additional support needs. The school will replace two condition 'C' schools on one of the school sites. The cost of the new school is £16.5m and the project is anticipated to be completed by April 2023.

Within both primary schools 32% of pupils have a range of additional support needs. The new building is therefore being designed to support the presumption of mainstream education with a focus on inclusive practice and supporting children with sensory sensitivities.

The building is to be designed and constructed to meet the Passivhaus standard. This sets a high specification for a sustainable building with a low carbon footprint and a properly ventilated environment conducive to pupil wellbeing and learning. By adopting this approach, PKC will be able to comply with actions set out in its own Interim Climate Emergency Report and Action Plan

### Challenge

Bringing together two schools and two communities, establishing the ethos and culture of the new school whilst being mindful of the diversity and distinctness of both communities.

### Exciting!

The project team are excited to be working on one of the first Passivhaus primary schools in Scotland.

## Paisley Grammar Community Campus Renfrewshire Council

The Paisley Grammar Community Campus forms part of the Council's commitment to regeneration in Paisley. The campus will be designed to provide learning environments which support and facilitate excellent joined up learning and teaching to meet the needs of all learners. It will provide the opportunity to build upon existing partnerships between secondary schools and West College allowing for a broad curricular offer and the opportunity to develop an "advanced higher hub" with bespoke facilities to support transition between the secondary and tertiary sectors; benefiting from the opportunities that will arise from Renfrewshire Council's economic strategy.

As a community campus it is envisaged that the learning environments will serve the wider community and there will be appropriate integration with the delivery of other public services in line with the place principle. The inclusion of a library / resource facility will support a number of significant opportunities for community learning and wider involvement such as lifelong learning; digital access; health and wellbeing support; creative opportunities; reducing social isolation; employability support; parenting; early literacy; information literacy; and Developing the Young Workforce.

### Challenge

Undertaking a design and build of a "PassivHaus" community campus and meeting the required SFT metric.

### Exciting!

The opportunity to provide the Paisley Grammar School Community with bespoke facilities which support learning and community engagement.



## Newton Farm Primary School

### South Lanarkshire Council

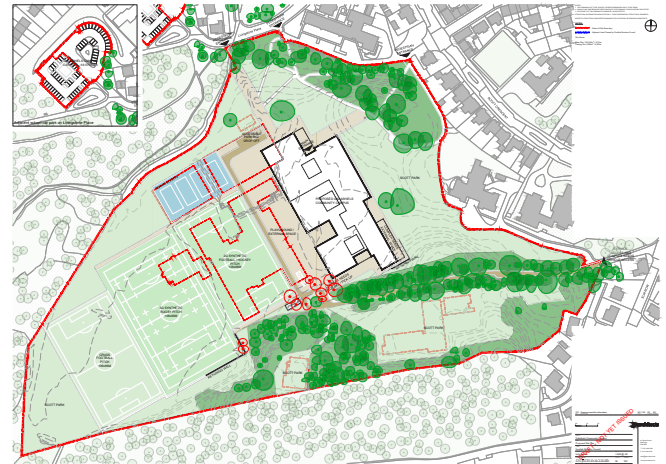
A two storey extension providing; 7x new classrooms, an enlarged dining area and additional general purpose/amenities spaces. The compact design replicates the existing school form. Similar to the existing school it has a free flowing circulation space which will not only provides the natural ventilation system but also creates an interesting roof-scape and pleasant communal spaces on both levels. The materials & glazing sizes/styles will also be the same as the existing which will make the extension look and feel like part of the existing school design.

#### Challenge

The main challenge to overcome will be building the extension within a 'live' school which is already oversubscribed. This will be challenging, but we will do everything we can to minimise any disruption.

#### Exciting!

The School Staff, designers and contractors look forward to integrating the construction process into the school curriculum during the construction, giving the pupils 'live' learning opportunities in respect to construction, design and environmental/sustainability measures.



## Galashiels Academy

### Scottish Borders Council

The proposed state of the art community campus will meet the educational and recreational needs of the wider community by replacing an outdated education facility with a world-class, multi-purpose facility that can help meet the modern day demands for learning and community spaces.

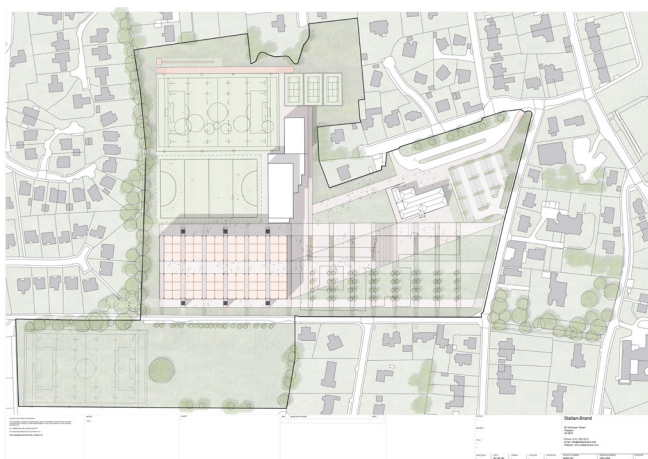
The new facility will act as a focal point for the local and wider community, being able to accommodate education, sporting, leisure, health and wellbeing and community support services within one campus. The facility's primary role will be to provide high quality learning opportunities and experiences that will enable our children, young people and residents to achieve their potential whilst maximising social interactions. Additionally it will act as a community resource where young people and the wider community can learn, develop and socialise.

#### Challenge

To complete the tandem build construction with minimum disruption to the young learners while providing a civic, community building that responds positively to its immediate and surrounding context.

#### Exciting!

The opportunity for young learners to engage and input into the design which in turn will foster a sense of ownership and pride in the new facility. With input from staff and the Design Team, young learners will be supported and guided to design an element of the new community campus via a process which closely mimics the RIBA Stages of the overall project. This will allow them to understand how important their voices can be as well as offering real world applications for the Curriculum For Excellence experiences and outcomes.



## Peebles High School

### Scottish Borders Council

The proposed state of the art replacement to Peebles High School that will meet the educational and recreational needs of the wider community by replacing an education facility badly damaged by fire in November 2019 with a world-class, multi-purpose facility that can help meet the modern day demands for learning and community spaces.

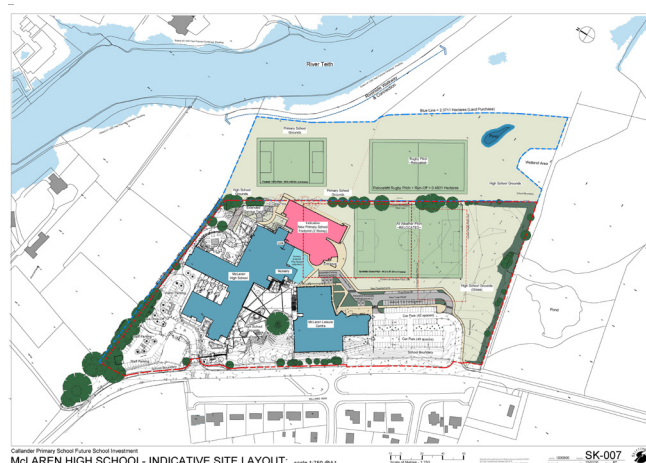
The new facility will act as a focal point for the local and wider community, being able to accommodate education, sporting, and community support services within one campus. The facility's primary role will be to provide high quality learning opportunities and experiences that will enable our children, young people and residents to achieve their potential whilst maximising social interactions. Additionally it will act as a community resource where young people and the wider community can learn, develop and socialise.

### Challenge

To complete the tandem build construction with minimum disruption to the young learners while providing a civic, community building that responds positively to its immediate and surrounding context

### Exciting!

The opportunity for young learners to engage and input into the design which in turn will foster a sense of ownership and pride in the new facility. With input from staff and the Design Team, young learners will be supported and guided to design an element of the new community campus via a process which closely mimics the RIBA Stages of the overall project. This will allow them to understand how important their voices can be as well as offering real world applications for the Curriculum For Excellence experiences and outcomes.



## Callander Primary School

### Stirling Council

Callander Primary School was constructed in 1906, and was originally the former McLaren High School. In 1965 the school became too small to operate as a high school and soon became Callander PS, and now this C listed building is no longer fit for purpose.

The project will see the relocation of the primary school to the site of McLaren HS developing an education and community campus. This project will be the last of a series of moves, which has already seen the relocation of Callander Nursery and the development of a new ASD and Complex Need accommodations all within the existing footprint of McLaren HS.

The campus will build on the work and culture change already in place to create an inspiring learning space from 0-years on to lifelong learning. The wider site includes a community owned leisure centre, and working in partnership will build Callander as a destination for sport and wellbeing, providing clean outcomes for education, wider community, inclusive growth and local regeneration.

### Challenge

The new development will be council owned and council managed but the proposed site will see the extension being developed around a PPP site.

### Exciting!

The exciting part of this project is developing and realising the wider, and more significant outcomes and benefits, from this collective campus aspiration and seeing the positive impact it will have on Stirling's young people and wider community.





Skypoint Centre Option

## Faifley Campus

### West Dunbartonshire Council

As stated in WDC Learning Estate Strategy 2020-2030 the Council is committed to the continuing development of state-of-the-art buildings which fully meet the needs of the individual young people, now and in the future, and also responds to the needs of the wider community to deliver lifelong learning opportunities. A priority Project has been identified to deliver a new Faifley Campus, incorporating:

- Edinbarnet P.S
- St Joseph's P.S
- Education Resource Centre (currently at Edinbarnet)
- ELCC Provision (Auchnacraig/Lennox)
- ASN Facility (currently at St Joseph's)
- Community Library
- Community space

During 2020 West Dunbartonshire Council has been working on a Technical Design Feasibility study considering options for a new build campus looking at the three existing sites, Edinbarnet, St Joseph's and Skypoint which could accommodate the Project.

### Challenge

Site selection process and subsequent approval could be an issue/challenge for us. Given there are three sites in consideration with pros and cons for all the sites to be considered.

### Exciting!

We will innovate in the relationship between digital and physical learning, and in the relationship between learning indoors and out. Learning in context, as part of the community, and where possible with the community, making use of shared spaces.



## East Calder Primary School

### West Lothian Council

East Calder Primary School was constructed in 1937, and the extensive use of asbestos prohibits the ability to adapt teaching spaces to respond to modern delivery of education and organisational flexibility, and severely constrains the ability to carry out lifecycle, planned and reactive maintenance to services and fabric of the building.

Through a feasibility option appraisal, it has been recognised that due to the constrained access to the existing school and the extensive latent asbestos throughout the building, the preferred option layout would be to relocate the school to the Xcite Leisure Centre, at Raw Holdings, East Calder.

The relocation embraces the Learning Estate Strategy, by combining the school with a community facility, utilising the existing games hall, synthetic 5-a-side pitches and other accommodation, whilst a new education block will allow East Calder Primary School to deliver a flexible approach to education.

The new school will provide capacity for 462 pupils and 64 nursery children and will complement the new Calderwood Primary School in East Calder.

### Challenge

Linking into a 'live' facility. Ensuring where possible a continuity to the service and amenities available to the public of East Calder whilst constructing a new school on the side of the leisure centre.

### Exciting!

This interaction between the old and new also presents an area which excites about the project in as much as it provides a challenge.

SCOTTISH  
FUTURES  
TRUST

**Architecture &  
Design Scotland**

Ailtearachd is Dealbhadh na h-Alba

[www.ads.org.uk](http://www.ads.org.uk)

[www.scottishfuturestrust.org.uk](http://www.scottishfuturestrust.org.uk)