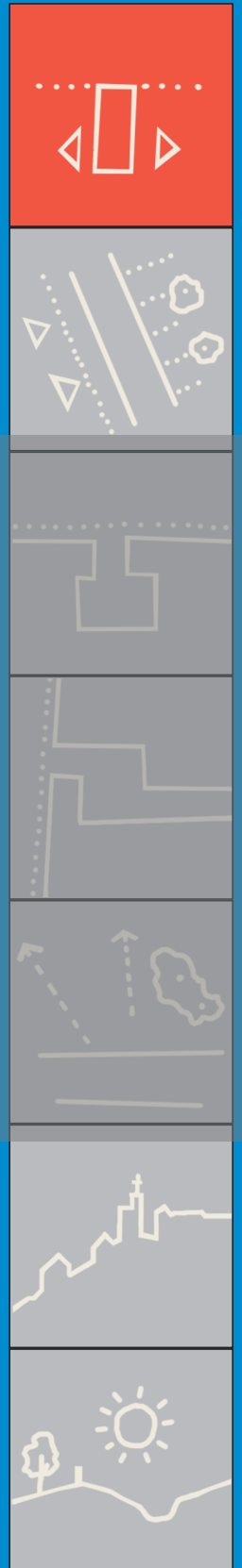


# Housing Typology (7 of 7): **Adaptables**



## Introduction



*^ Town houses in Edinburgh's New Town have seen successive adaptations (image: Katherine, CC BY-ND 2.0)*

This piece explores a sample of housing with more than one face and use. With current policy seeking adaptability in the design of new housing we look at examples allowing potential for the home to accommodate change and different uses in a number of ways. Illustrated by mapping, photography and scale drawings, our aim is to show the linkage between design of the house and the place of which it forms a part.

Such housing can provide longer-term value and mixed use neighbourhoods, allowing lifestyle changes to be accommodated, more sustainable working patterns and less reliance on the car.

Here we illustrate built examples where architects and urban designers have sought to reconcile contemporary living with the wider roles and functions of the individual house that are integral to placemaking.

## Roles of adaptable housing

The success of this form can be attributed to some of the useful roles it plays:

### 1. Economic Value

- stimulating small business, local enterprise and home working

### 2. Townscape Value

- bringing daytime activity to local streets

### 3. Cultural Value

- supporting mixed-tenure mixed-use neighbourhoods
- accommodating changing needs over time
- permitting communities to flourish in situ

### 4. Environmental Value

- contributing to sustainability
- giving long-term value

## Viewing this data

Drawing and mapping were prepared by Architecture and Design Scotland in 2013, based on material supplied by the architects involved.



^ Access pend from street side.

## Balvonie Brae, Inverness

A house designed to accommodate market gardening and/or to allow self-sufficiency. The house, garden and pend access are planned together. One half of the plan has the kitchen, associated with vegetable beds, and the other half has the dining and living rooms, associated with a lawn and the recreational part of the garden. The covered pend access with a sink and worktop gives a versatile form of sheltered outdoor space.

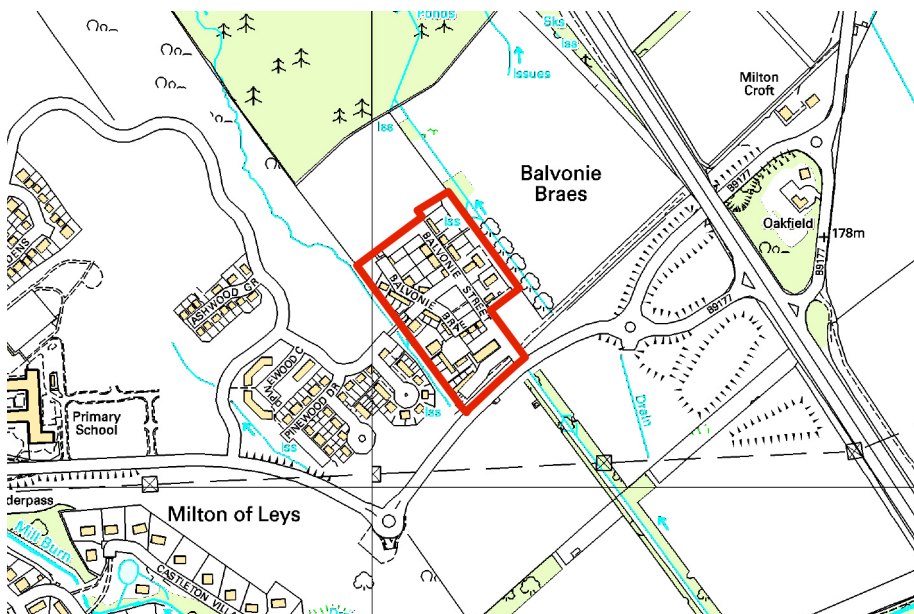
The result is a house type adaptable and well suited to an outdoor and active lifestyle.

This house forms part of Scotland's Housing Expo site at Balvonie, Inverness.

Credits

Design: Rural Design

Image: Rural Design

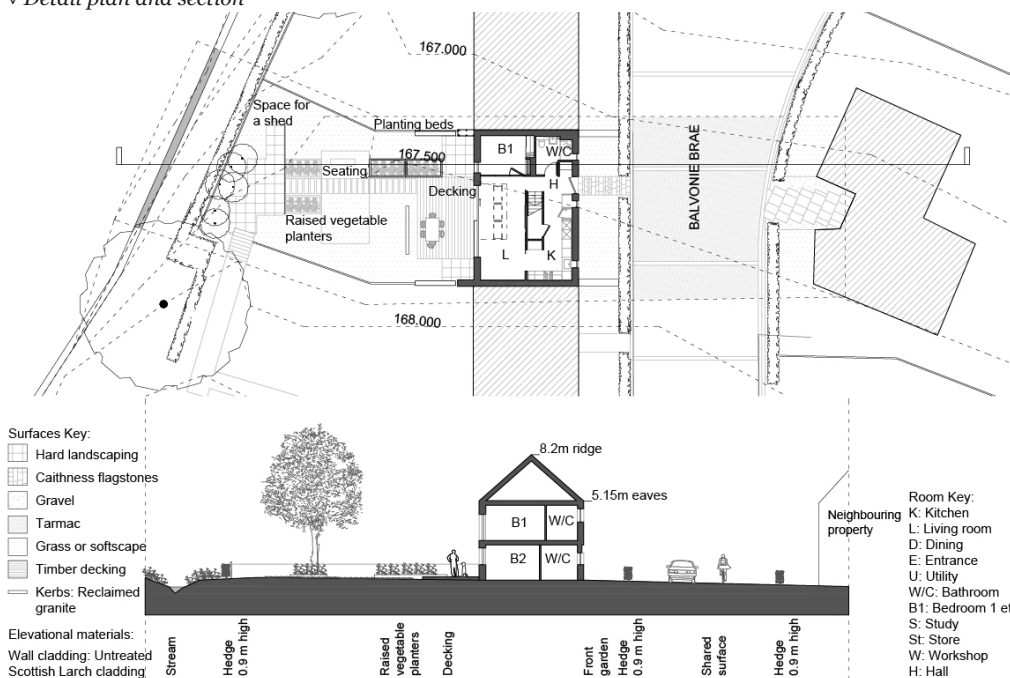


^ Location plan



^ Site plan

∨ Detail plan and section







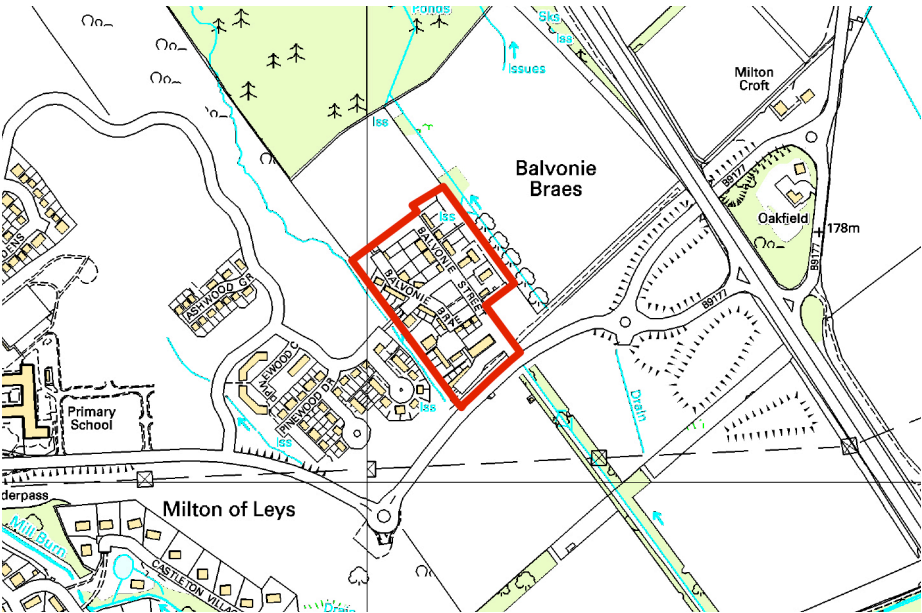
^ View towards entrance on Balvonie Street

# Balvonie Street, Inverness

A house specifically designed to allow adaptation to the changing circumstances and needs of families over time, working with the life cycle of a family. The annexe, which adjoins the house, can be adapted for use as a granny flat, a student bedsit, or to provide additional bedrooms for a growing family. Alternatively the annexe can work as a home office – allowing separation between home life and work.

This house forms part of Scotland's Housing Expo site at Balvonie, Inverness.

Credits  
 Design: Brennan & Wilson Architects  
 Image 1: AREA  
 Image 2 : Brennan & Wilson Architects

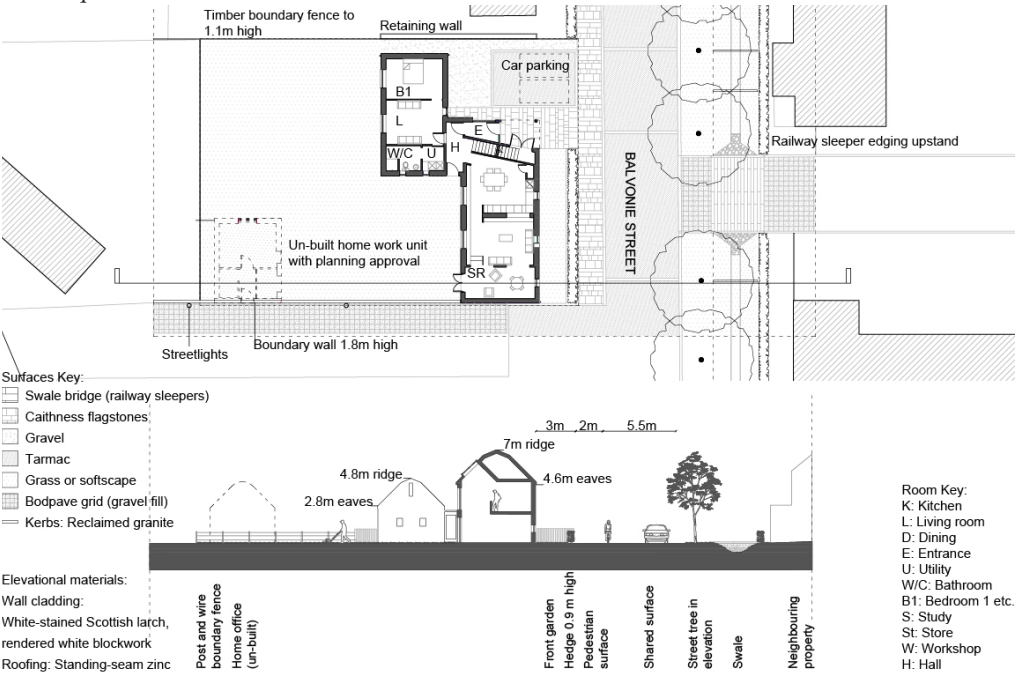


^ Location plan



^ Site plan

## Detail plan and section



^ Rear elevation viewed from the corner of Balvonie Brae





^ Elevation facing Balvonie Green

## Balvonie Green, Inverness

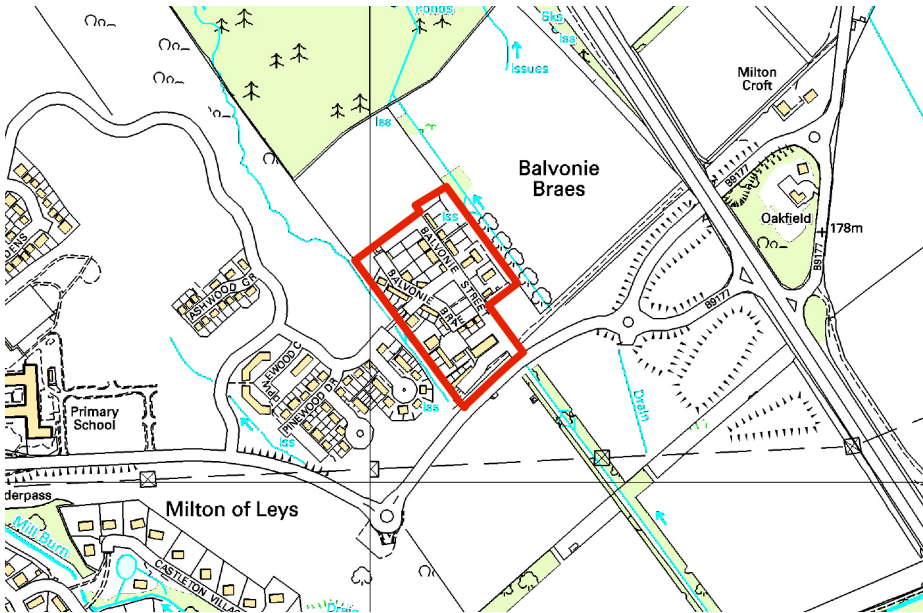
One of three double-fronted houses. Each house has a domestic frontage towards the street and then a separate Home Office facing a mews street across the garden at the back of the plot. This layout permits a separate presence and entrance for the office alongside similar offices and studios on adjoining plots. The co-location of similar arrangements on a number of adjoining plots permits sharing of facilities. The corner house is an example of a particularly exuberant house type that is conceived to engage with a very public street corner location.

This house forms part of Scotland's Housing Expo site at Balvonie, Inverness.

Credits

Design: jmarchitects

Images: AREA

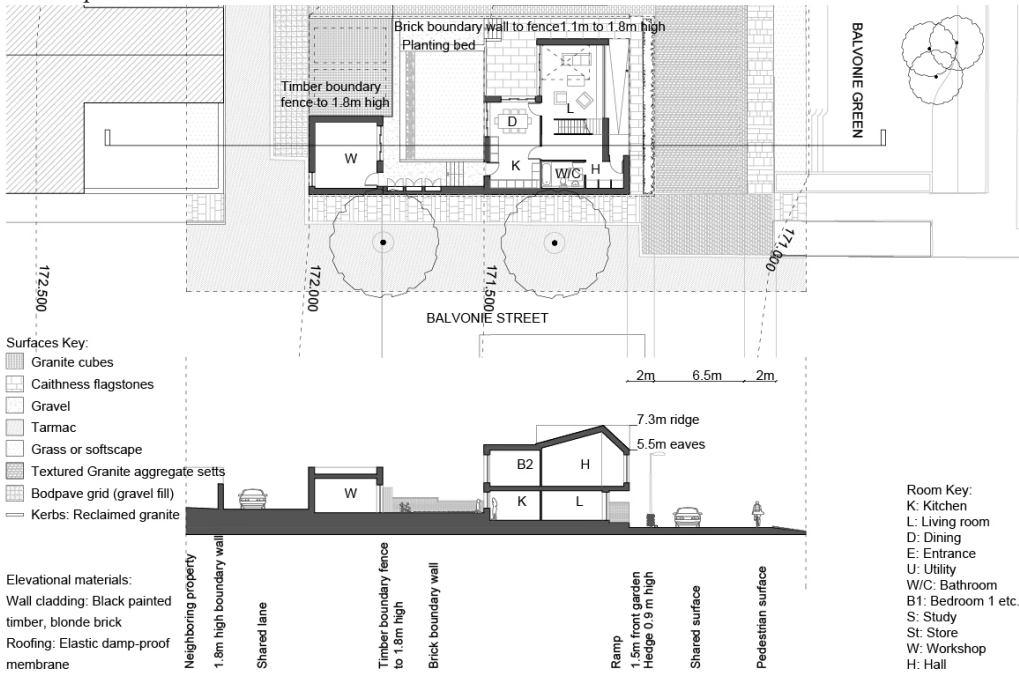


^ Location plan



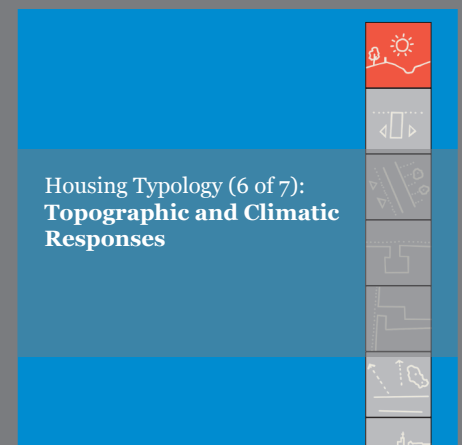
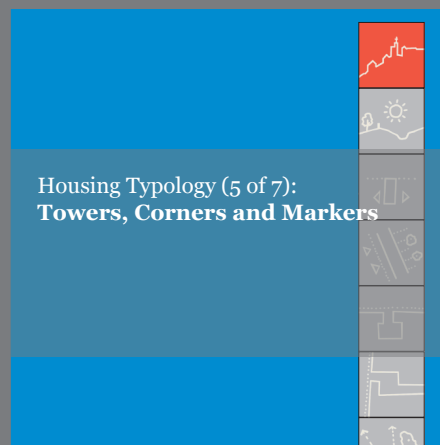
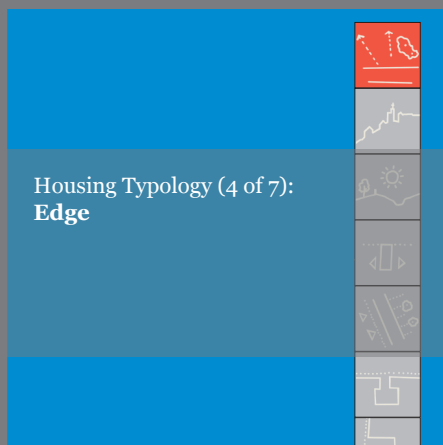
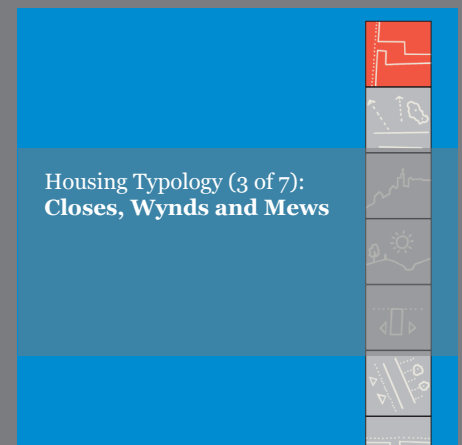
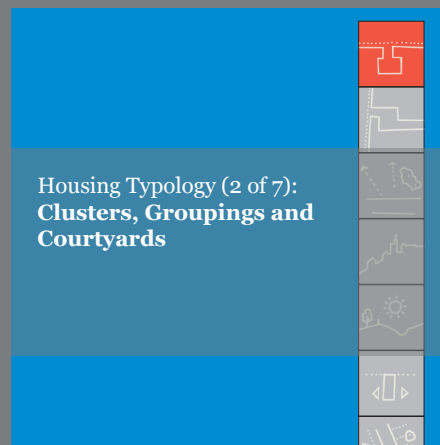
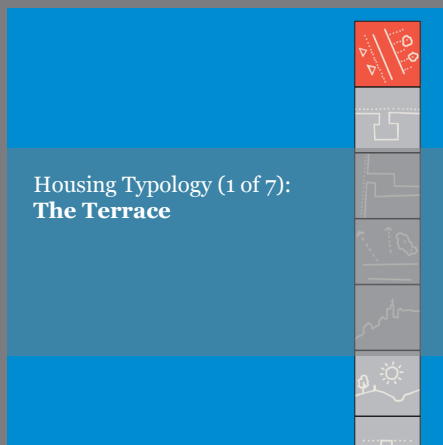
^ Site plan

### Detail plan and section



^ Home office facing mews street

*Other documents in this series:*



*Find out more about Architecture & Design Scotland:*

[www.ads.org.uk](http://www.ads.org.uk)  
@ArcDesSco  
T: 0131 556 6699  
E: [info@ads.org.uk](mailto:info@ads.org.uk)

Bakehouse Close,  
146 Canongate,  
Edinburgh EH8 8DD

Level 2, The Lighthouse, 11  
Mitchell Lane, Glasgow, G1  
3NU